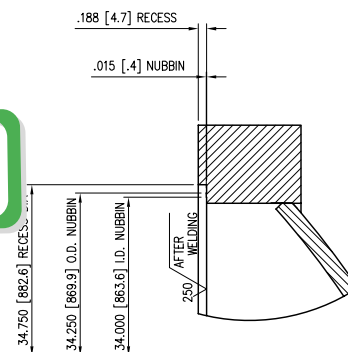


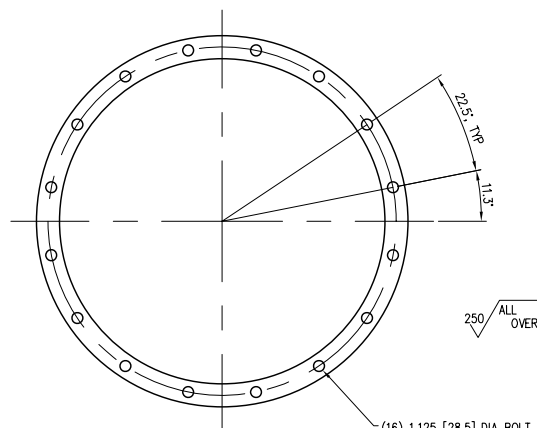
SECTION A-A

- NOTES:
1. ALL BOLT HOLES TO STRADDLE CENTERLINES
 2. ALL PRIMARY DIMENSIONS ARE IN INCHES AND [MM]
 3. TOLERANCE IN ACCORDANCE WITH TEMA STANDARDS

APPROVED

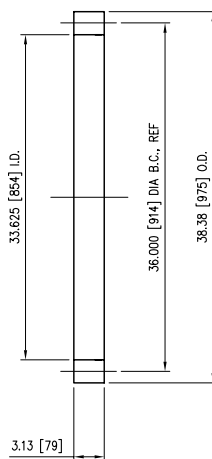


DETAIL "B"
TYP BOTH FLANGES



(16) 1.125 [28.5] DIA BOLT HOLES
EQUALLY SPACED ON A
38.000 [914.4] DIA B.C. REF
LOCATE AS SHOWN

RING FLANGE DETAIL
ITEM #2

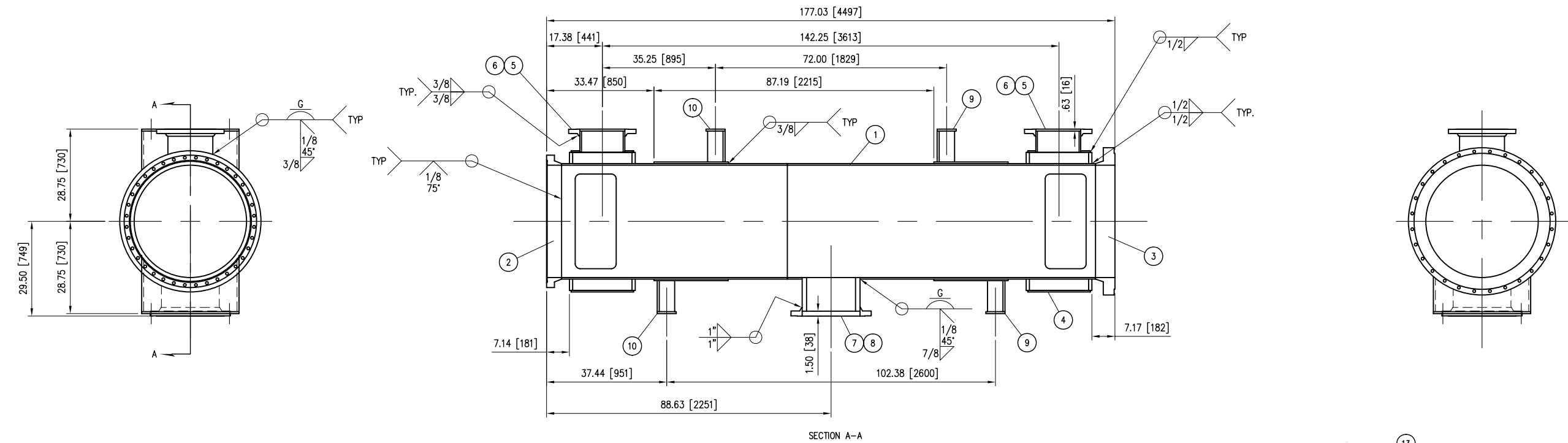


6	2	PASS RIB, 1/2" THK, 8.68" x 20.63"	STEEL	SA-516 70				B-18079
5	1	PASS RIB, 1/2" THK, 8.68" x 33.00"	STEEL	SA-516 70				B-18078
4	2	PASS RIB, 1/2" THK, 8.68" x 17.43"	STEEL	SA-516 70				B-18077
3	1	LIFT RING	FGD STL	SA-105				3062-99-919-000
2	1	RING FLANGE (PER DETAIL)	STEEL	SA-516 70	C	2030-35-075-000		3025-27-101-000
1	1	DISHED HEAD, 33.62" OD, 1/2" THK, 25" DR	STEEL	SA-516 70				4109-25-0801-03
Item	Qty	Description	Mat'l	Specification	Size	Dwg No	Part No	
API BASCO DEFAULTS (UNLESS OTHERWISE SPECIFIED)								
ALL DIMENSIONS IN INCHES UNLESS DENOTED AS METRIC (mm)			TOLERANCES (unless specified) PER TEMA STANDARDS			FILE NAME		
1" = 1 INCH = 25.4mm			3RD ANGLE			Y:\5872000\Draws\2013\2030-35-075-000.dwg		
This document contains proprietary information and may not be disclosed to others for any purpose or used for manufacturing purposes without written permission from API Heat Transfer.			CONTRACT NO -			DRAWN 5/23/11 TJC		
CHECK			SCALE			SIZE DWG NO		
1:10			C			2030-35-075-000		

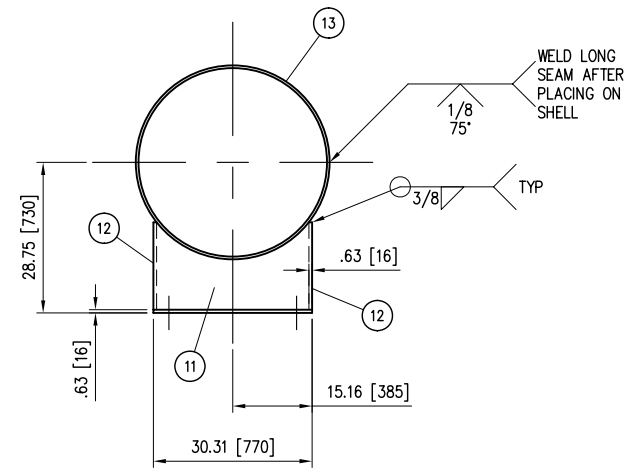
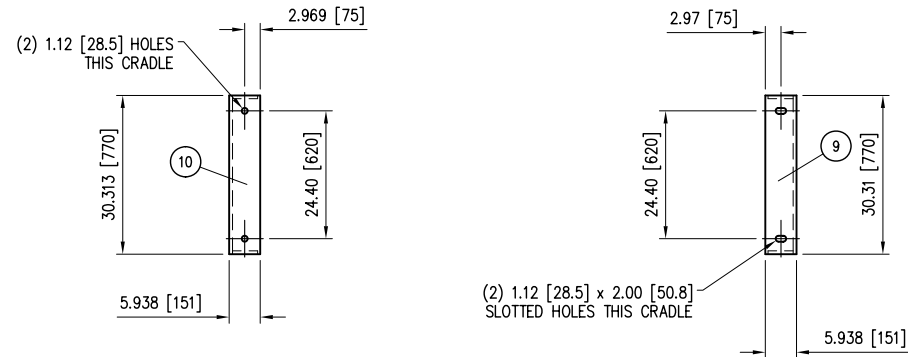
API Basco
Heat Transfer Technology

FLTG TSHT COVER ASSEMBLY
33.63" I.D.

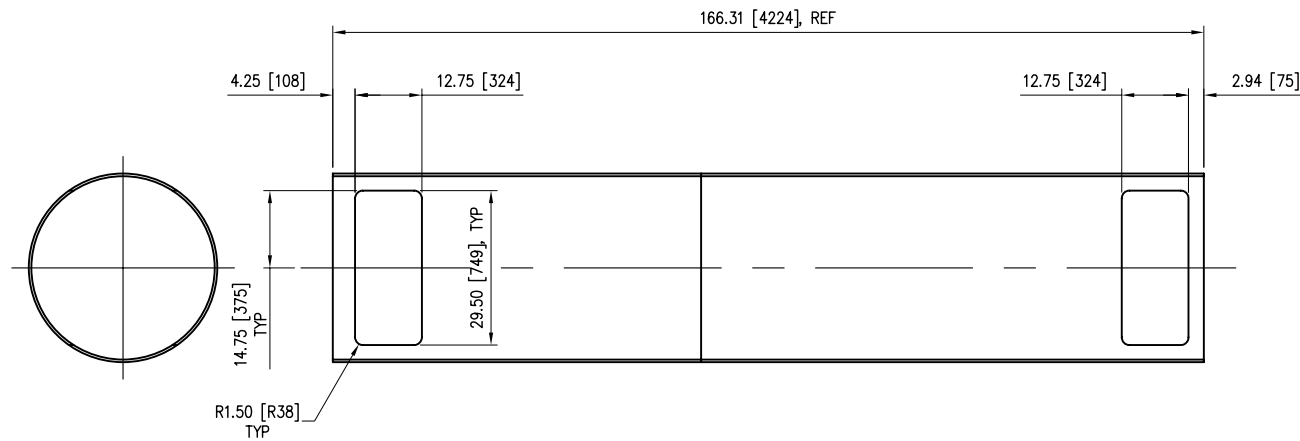
REV



- NOTES:
1. ALL BOLT HOLES TO STRADDLE CENTERLINES
 2. ALL PRIMARY DIMENSIONS ARE IN INCHES AND [MM]
 3. TOLERANCE IN ACCORDANCE WITH TEMA STANDARDS




APPROVED



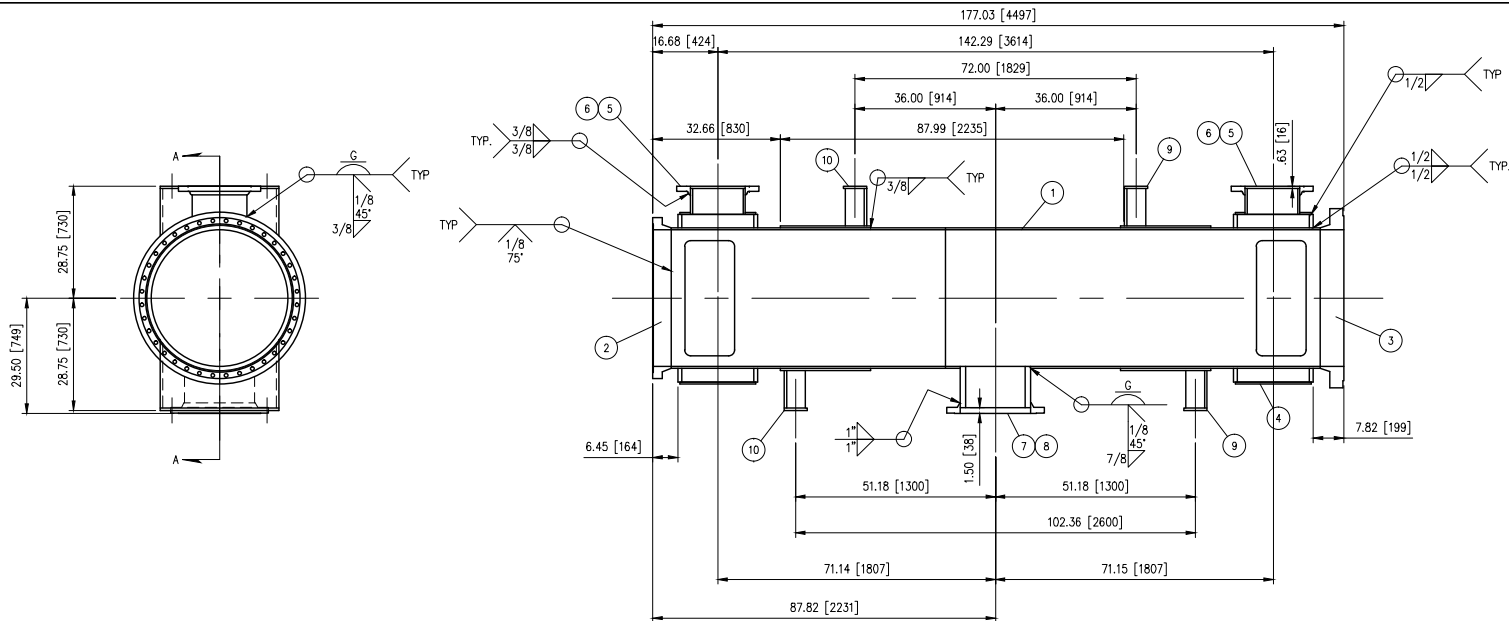
SHELL CYLINER CUTOUT DETAIL

CUT OUTS TO BE ON BOTH SIDES OF THE CYLINDER

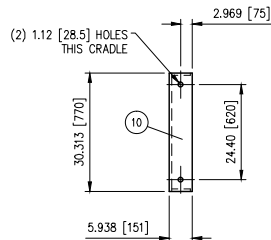
13	2	CYLINDER, ROLLED, 36.12" ID, 1/2" THK, 23.12" LG	STEEL	SA-516 70	A	4032-28-0801-11	4032-28-0801-11
12	4	CRADLE SIDE SUPPORT	STEEL	SA-516 70			521-10-0101-01662
11	2	CRADLE WEB PLATE	STEEL	SA-516 70			B-18083
10	1	CRADLE BASE PLATE WITH HOLES	STEEL	SA-516 70			B-18082
9	1	CRADLE BASE PLATE WITH SLOTS	STEEL	SA-516 70			B-18081
8	1	FLANGE, SLIP-ON, 18"-150# ANSI-RF	FGD STL	SA-105			4001-18-1501-00
7	1	PIPE, 18" SCH 120 (1.375) x 16.00" LG	STEEL	SA-106 B SMLS			505-18-1202-01600
6	2	FLANGE, SLIP-ON, 14"-150# ANSI-RF	FGD STL	SA-105			4001-14-1501-00
5	2	PIPE, 14" SCH XH (.500) x 10.50" LG	STEEL	SA-106 B SMLS			505-14-0202-01050
4	2	CYLINDER, ROLLED, 44.00" OD, 1/2" THK, 19.50" LG	STEEL	SA-516 70	A	4032-33-0801-15	4032-33-0801-15
3	1	FLANGE, WELD NECK, FLOATING END	FGD STL	SA-350 LF2	B	4002-99-1502-05	4002-99-1502-05
2	1	FLANGE, WELD NECK, STATIONARY END	FGD STL	SA-350 LF2	B	4002-99-1502-04	4002-99-1502-04
1	1	CYLINDER, ROLLED, 35.00" ID, 1/2" THK, 166.31" LG	STEEL	SA-516 70	B	4032-28-0801-10	4032-28-0801-10
Item	Qty	Description	Mat'l	Specification	Size	Dwg No	Part No

API BASCO DEFAULTS (UNLESS OTHERWISE SPECIFIED)		FILE NAME V:\S&T2000\Class2\2065\2065-35-184-000.dwg		<div>API Basco</div> <div>Heat Transfer Technology</div>		
ALL DIMENSIONS IN INCHES UNLESS DENOTED AS METRIC (mm) 1" = 1 INCH = 25.4mm  3rd ANGLE		CONTRACT NO —				
This document contains proprietary information and may not be disclosed to others for any purpose or used for manufacturing purposes without written permission from API Heat Transfer.		DRAWN 5/24/11 TJC		SHELL ASSEMBLY 35184 AES		
		CHECK		SIZE C	DWG NO 2065-35-184-000	REV 2
		SCALE 1: 24				

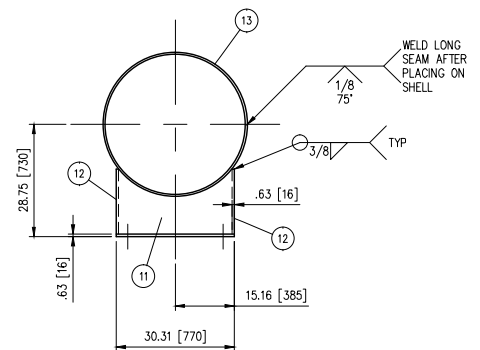
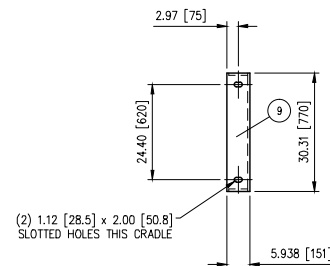
2	REVERSED POSITION OF IT'S 9 & 10	TJC	8/11/11
1	ADDED ITEM BALOONS TO CRADLES	TJC	6/13/11
No	Revision	By	Date



- NOTES:
1. ALL BOLT HOLES TO STRADDLE CENTERLINES
 2. ALL PRIMARY DIMENSIONS ARE IN INCHES AND [MM]
 3. TOLERANCE IN ACCORDANCE WITH TEMA STANDARDS

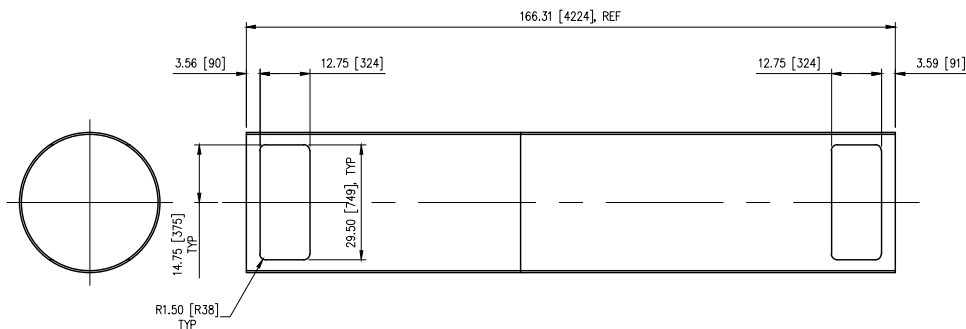


SECTION A-A



CRADLE ASSEMBLY DETAIL

APPROVED



SHELL CYLINDER CUTOUT DETAIL

CUT OUTS TO BE ON BOTH SIDES OF THE CYLINDER

13	2	CYLINDER, ROLLED, 36.12" ID, 1/2" THK, 23.12" LG	STEEL	SA-516 70	A	4032-28-0801-11	4032-28-0801-11
12	4	CRADLE SIDE SUPPORT	STEEL	SA-516 70		521-10-0101-01662	
11	2	CRADLE WEB PLATE	STEEL	SA-516 70		B-18083	
10	1	CRADLE BASE PLATE WITH HOLES	STEEL	SA-516 70		B-18082	
9	1	CRADLE BASE PLATE WITH SLOTS	STEEL	SA-516 70		B-18081	
8	1	FLANGE, SLIP-ON, 18"-150# ANSI-RF	FGD STL	SA-105		4001-18-1501-00	
7	1	PIPE, 18" SCH 120 (1,375) x 16.00" LG	STEEL	SA-106 B SMLS		505-18-1202-01600	
6	2	FLANGE, SLIP-ON, 14"-150# ANSI-RF	FGD STL	SA-105		4001-14-1501-00	
5	2	PIPE, 14" SCH 40 (5.00) x 10.50" LG	STEEL	SA-106 B SMLS		505-14-0202-01050	
4	2	CYLINDER, ROLLED, 44.00" OD, 1/2" THK, 19.50" LG	STEEL	SA-516 70	A	4032-33-0801-15	4032-33-0801-15
3	1	FLANGE, WELD NECK, FLOATING END	FGD STL	SA-350 LF2	B	4002-99-1502-05	4002-99-1502-05
2	1	FLANGE, WELD NECK, STATIONARY END	FGD STL	SA-350 LF2	B	4002-99-1502-04	4002-99-1502-04
1	1	CYLINDER, ROLLED, 35.00" ID, 1/2" THK, 166.31" LG	STEEL	SA-516 70	B	4032-28-0801-10	4032-28-0801-10

API BASCO DEFAULTS (UNLESS OTHERWISE SPECIFIED)				FILE NAME			
ALL DIMENSIONS IN INCHES UNLESS DENOTED AS METRIC (mm)				V:\S&T2000\Class2\0065\2005-35-184-000.dwg			
TOLERANCES (unless specified) PER TEMA STANDARDS				CONTRACT NO -			
1" = 1 INCH = 25.4mm				DRAWN 5/24/11 TJC			
3rd ANGLE				CHECK			
This document contains proprietary information and may not be disclosed to others for any purpose or used for manufacturing purposes without written permission from API Heat Transfer.				SIZE DWG NO			
				SCALE 1:24			

API Basco
Heat Transfer Technology

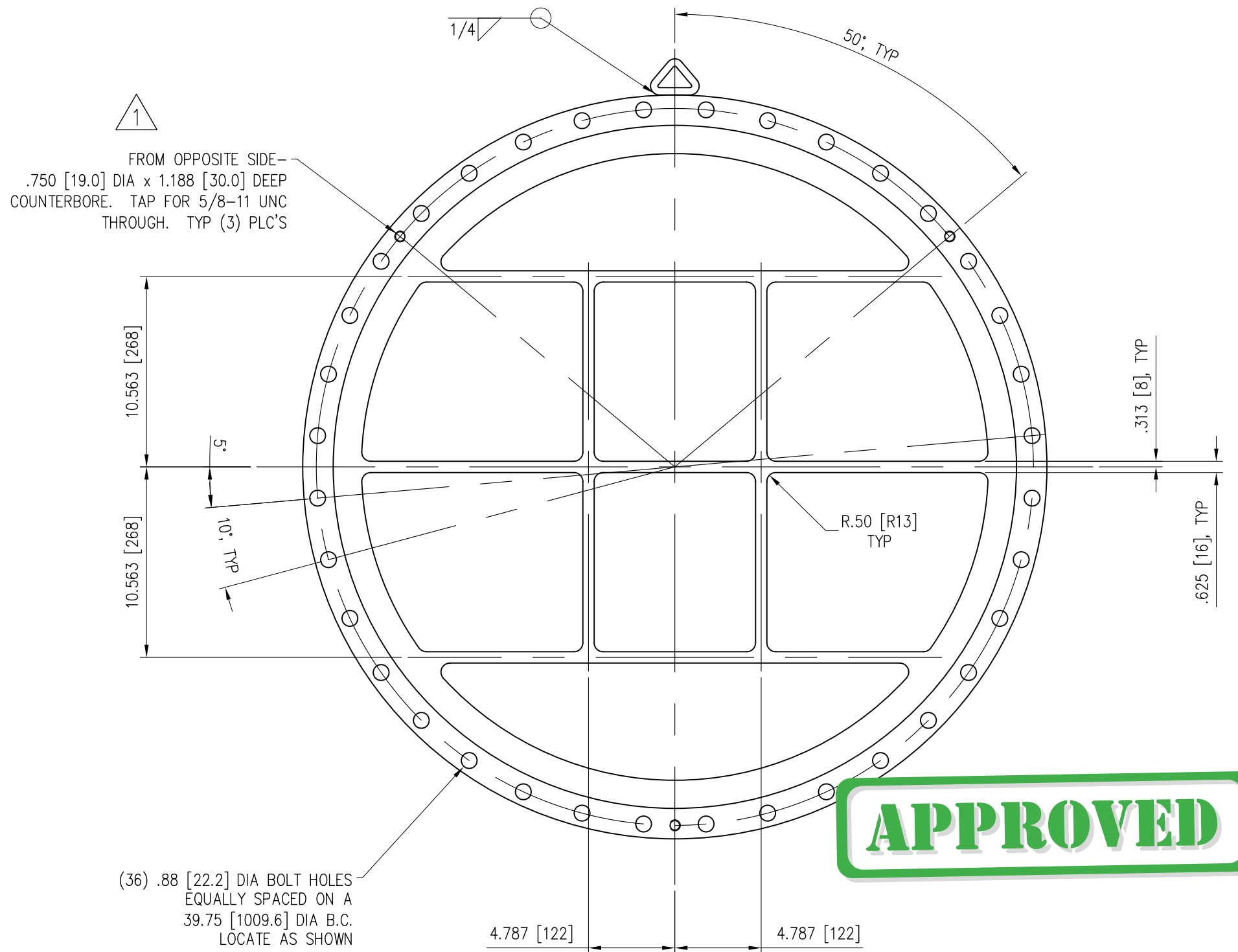
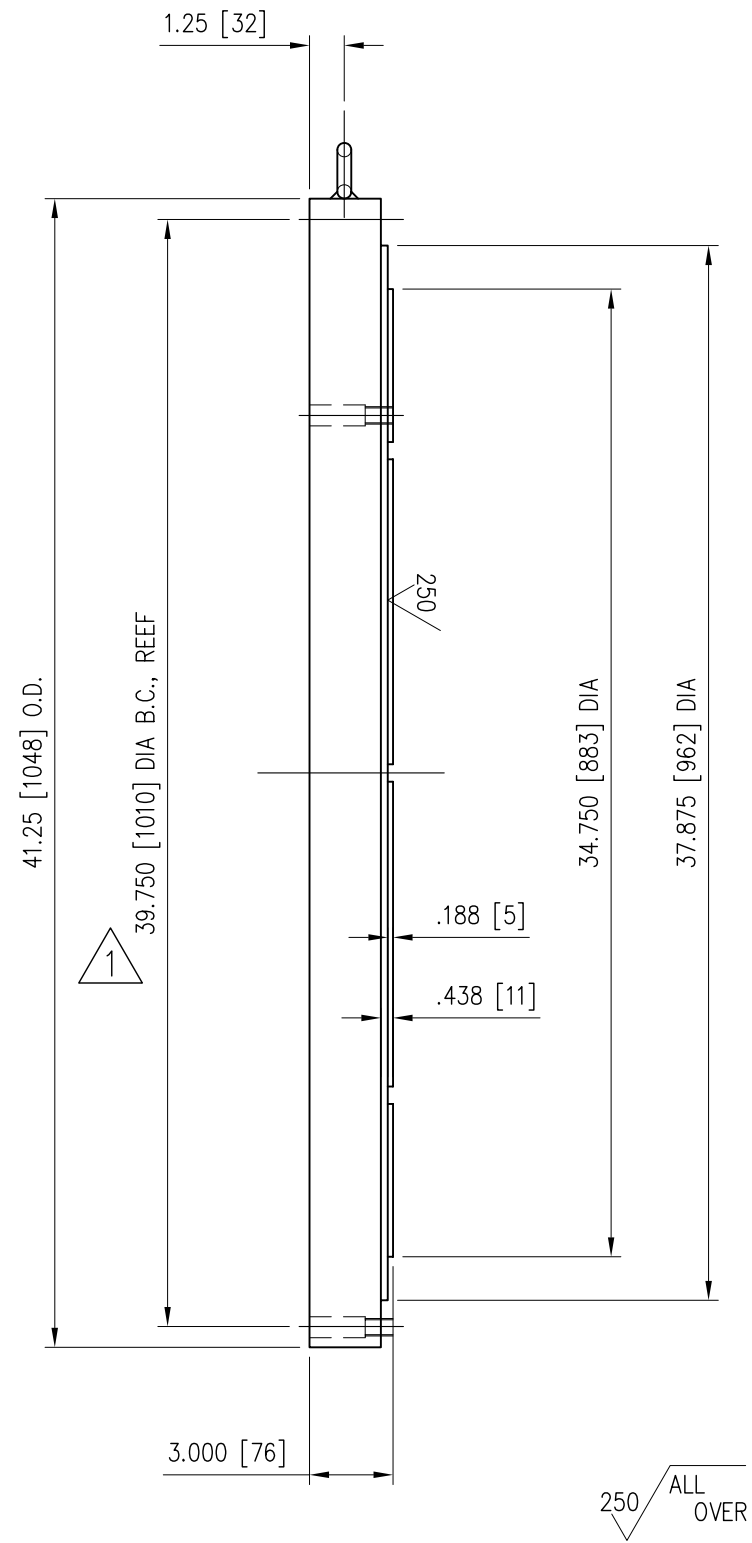
SHELL ASSEMBLY
35184 AES

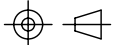
2065-35-184-000

REV 3

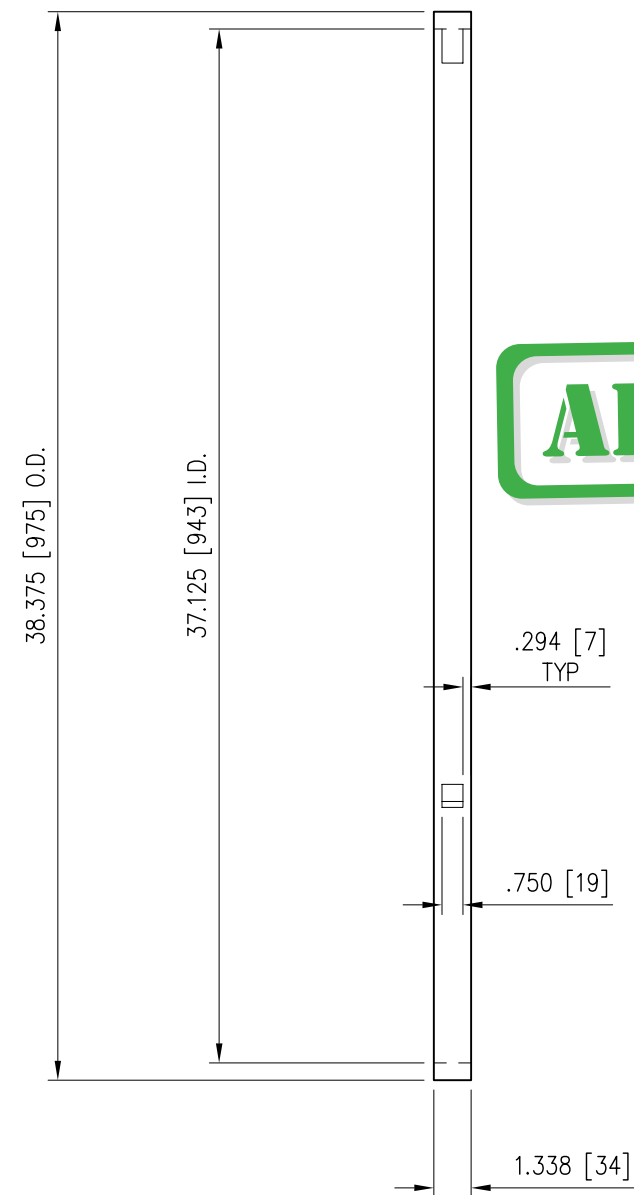
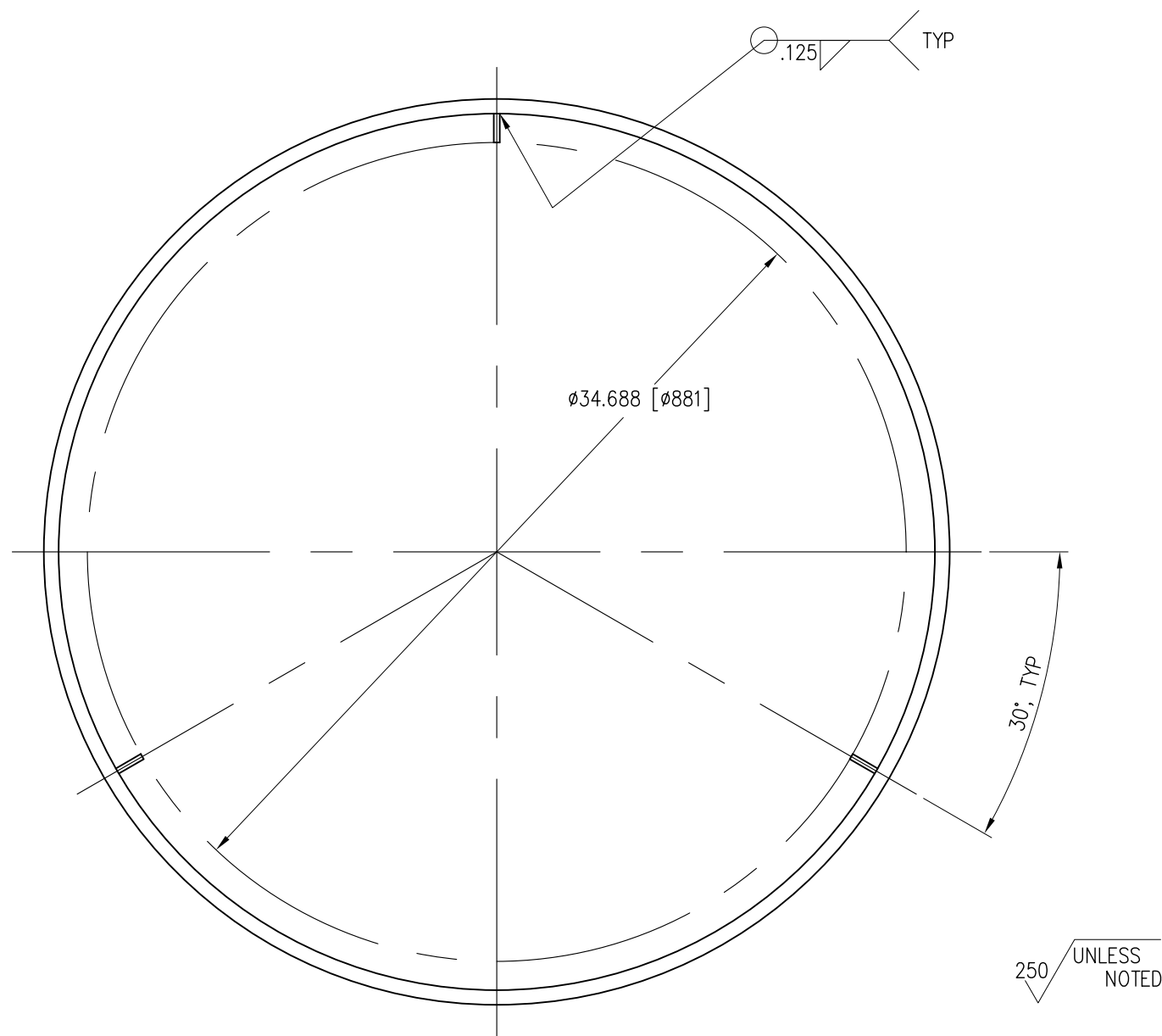
3	REVISED DIMENSIONS	TJC	12/9/11
2	REVERSED POSITION OF TYP'S 9 & 10	TJC	8/11/11
1	ADDED ITEM BALLOONS TO CRADLES	TJC	6/13/11
No	Revision	By	Date

2	REVISED TUBE SHEET RAISED FACE DIM	TJC	8/11/11
1	CORRECTED IT #3 DETAIL TITLE. ADDED DIMENSION.	TJC	6/13/11
to	Revision	By	Date

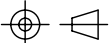


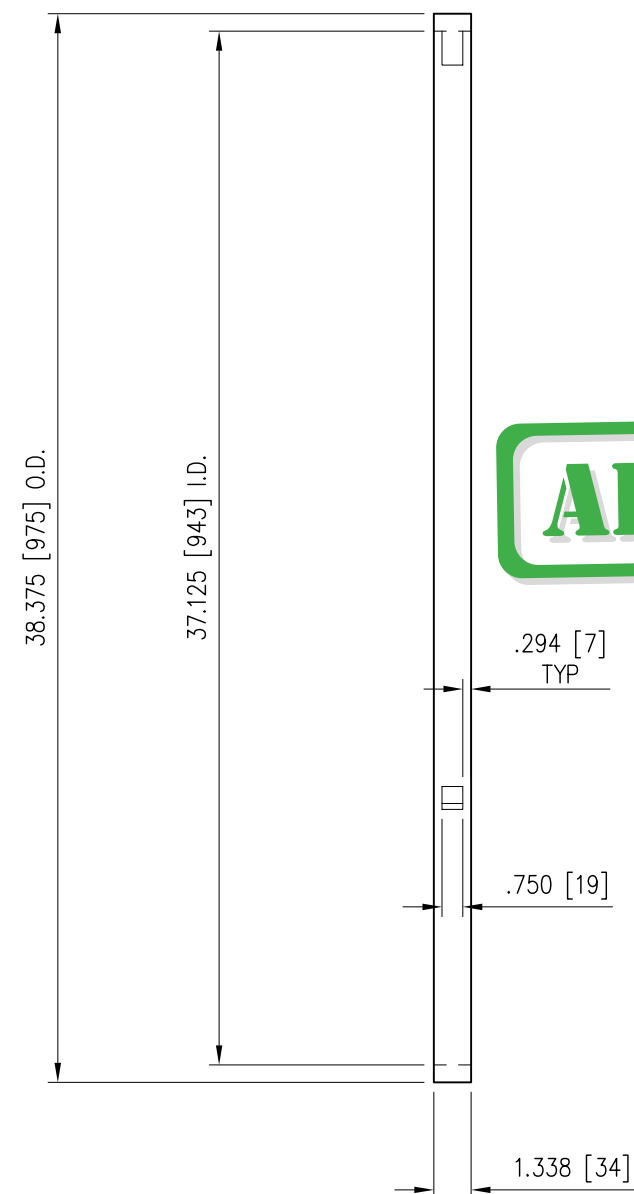
2	1	LIFT RING	FGD STL	SA-105		3062-99-919-000		
1	1	CIRCLE, 3-1/4" THK, 41.50" OD	STEEL	SA-516 70		4034-32-5601-00		
Item	Qty	Description	Mat'l	Specification	Size	Dwg No	Part No	
API BASCO DEFAULTS (UNLESS OTHERWISE SPECIFIED)			FILE NAME		<div>API Basco</div> <div>Heat Transfer Technology</div>			
ALL DIMENSIONS IN INCHES UNLESS DENOTED AS METRIC (mm)		TOLERANCES (unless specified) PER TEMA STANDARDS	V:\S&T2000\Class3\3018\3018-27-101-000.dwg					
<div>1" = 1 INCH = 25.4mm</div> <div> 3rd ANGLE</div> <div>This document contains proprietary information and may not be disclosed to others for any purpose or used for manufacturing purposes without written permission from API Heat Transfer.</div>			CONTRACT NO —		CHANNEL COVER 35"			
			DRAWN 5/23/11 TJC					
			CHECK		SIZE		DWG NO	REV
			SCALE 1: 7		B			

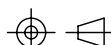
1	CORRECTED BOLT CIRCLE DIM. REF REVISED COUNTERBORE.	TJC	6/13/11
No	Revision	By	Date

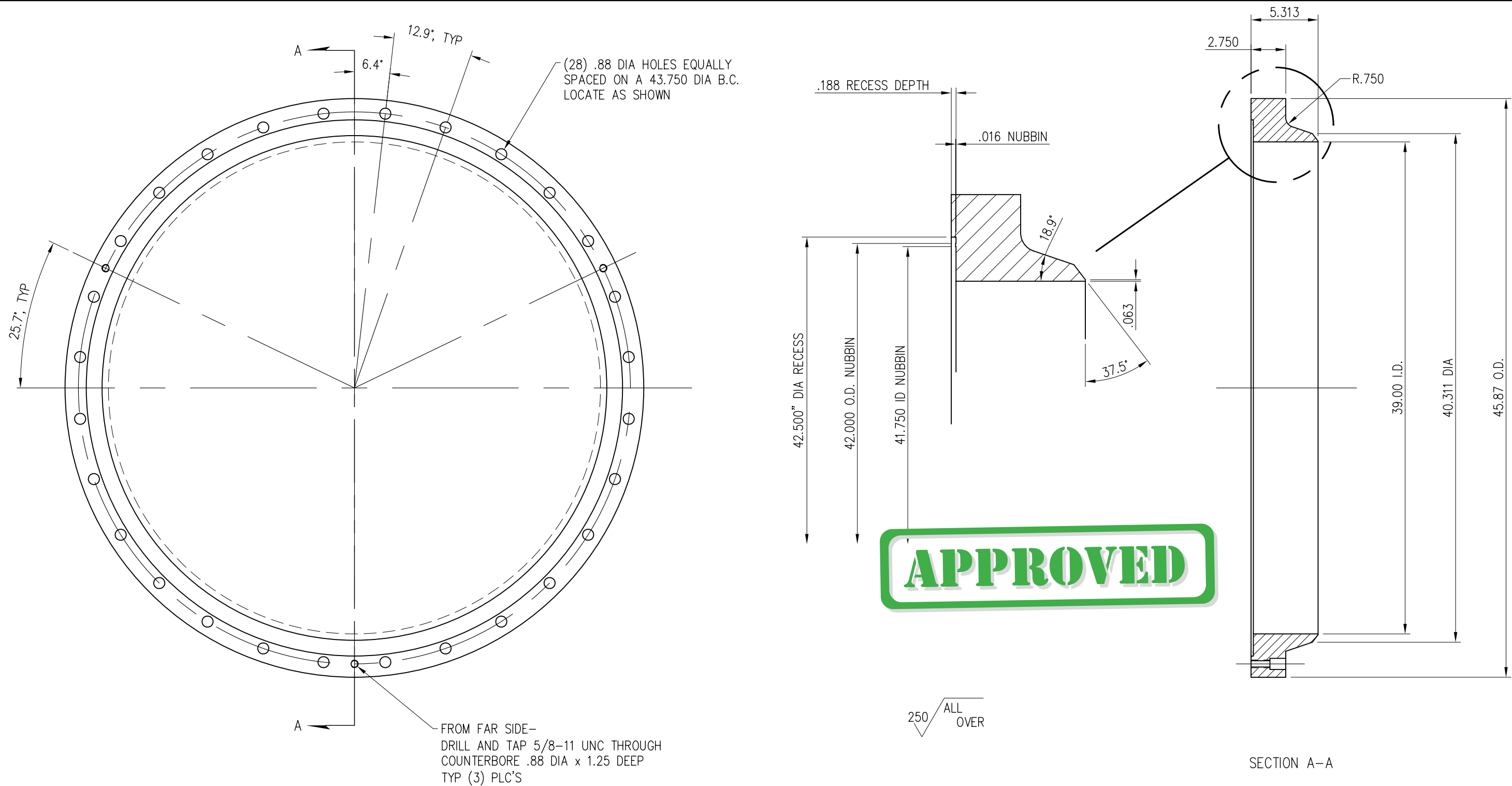


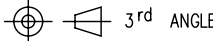
APPROVED

2	3	BAR, 1/4" THK, 3/4" W, 1.218" LG	STEEL	SA-36		511-04-0805-00121	
1	1	RING, 35.375" OD, 37.125" ID, 1.375" THK	STEEL	SA-516 70		521-06-0101-000	
Item	Qty	Description	Mat'l	Specification	Size	Dwg No	Part No
API BASCO DEFAULTS (UNLESS OTHERWISE SPECIFIED)			FILE NAME		<div>API Basco</div> <div>Heat Transfer Technology</div> <div>25"</div> <div>FLTG TUBE SHET SPACER RING</div>		
<div>ALL DIMENSIONS IN INCHES UNLESS DENOTED AS METRIC (mm)</div> <div>1" = 1 INCH = 25.4mm</div> <div> 3rd ANGLE</div> <div>This document contains proprietary information and may not be disclosed to others for any purpose or used for manufacturing purposes without written permission from API Heat Transfer.</div>			V:\S&T2000\Class3\3064\3064-27-901-000.dwg				
			CONTRACT NO —				
			DRAWN 6/13/11 TJC				
						CHECK	
			SCALE 1: 7		DWG NO 3064-27-901-000		
					REV —		

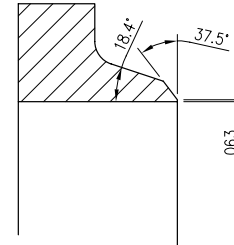
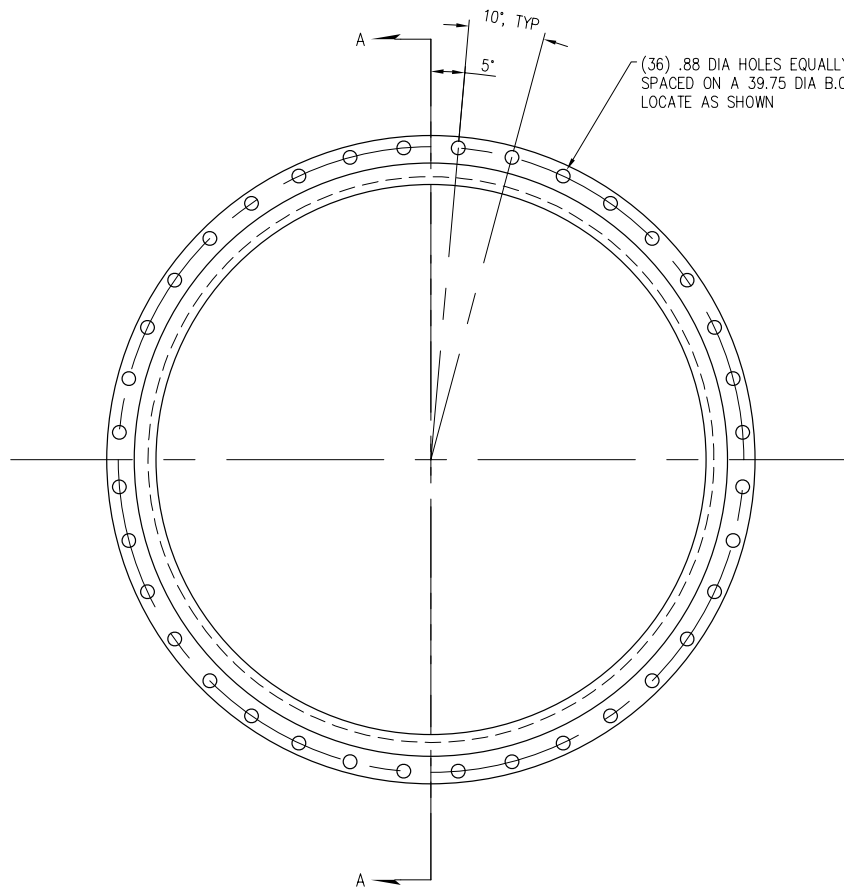


2	3	BAR, 1/4" THK, 3/4" W, 1.218" LG	STEEL	SA-36		511-04-0805-00121		
1	1	RING, 35.375" OD, 37.125" ID, 1.375" THK	STEEL	SA-516 70		521-06-0101-000		
Item	Qty	Description	Mat'l	Specification	Size	Dwg No	Part No	
API BASCO DEFAULTS (UNLESS OTHERWISE SPECIFIED)			FILE NAME		<div>API Basco</div> <div>Heat Transfer Technology</div> <div>35"</div> <div>FLTG TUBE SHET SPACER RING</div>			
<div>ALL DIMENSIONS IN INCHES UNLESS DENOTED AS METRIC (mm)</div> <div>1" = 1 INCH = 25.4mm</div> <div> 3rd ANGLE</div> <div>This document contains proprietary information and may not be disclosed to others for any purpose or used for manufacturing purposes without written permission from API Heat Transfer.</div>			V:\S&T2000\Class3\3064\3064-27-901-000.dwg					
			CONTRACT NO —					
			DRAWN 6/13/11 TJC					
								CHECK
			SCALE 1: 7		B		3464-27-901-000	—



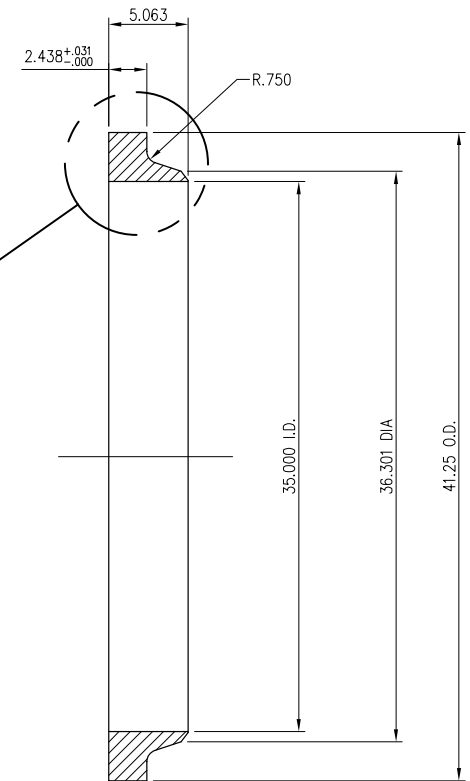
1	1	WELD NECK FLANGE		FORGED STEEL	SA-350 LF2			
Item	Qty	Description		Mat'l	Specification	Size	Dwg No	Part No
API BASCO DEFAULTS (UNLESS OTHERWISE SPECIFIED)				FILE NAME		<div>API Basco</div> <div>Heat Transfer Technology</div> <div>WELD NECK FLANGE</div> <div>40"</div>		
<div>ALL DIMENSIONS IN INCHES UNLESS DENOTED AS METRIC (mm)</div> <div>1" = 1 INCH = 25.4mm</div> <div> 3rd ANGLE</div> <div>This document contains proprietary information and may not be disclosed to others for any purpose or used for manufacturing purposes without written permission from API Heat Transfer.</div>		TOLERANCES (unless specified) PER TEMA STANDARDS		V:\S&T2000\Class4\4022\4022-99-1502-02.dwg				
		CONTRACT NO —						
		DRAWN 4/8/11 TJC						
				CHECK		SIZE		DWG NO
		SCALE 1: 8		B		4002-99-1502-02		1

1	CHANGED NUBBIN DIAMETERS.	TJC	5/9/11
No	Revision	By	Date




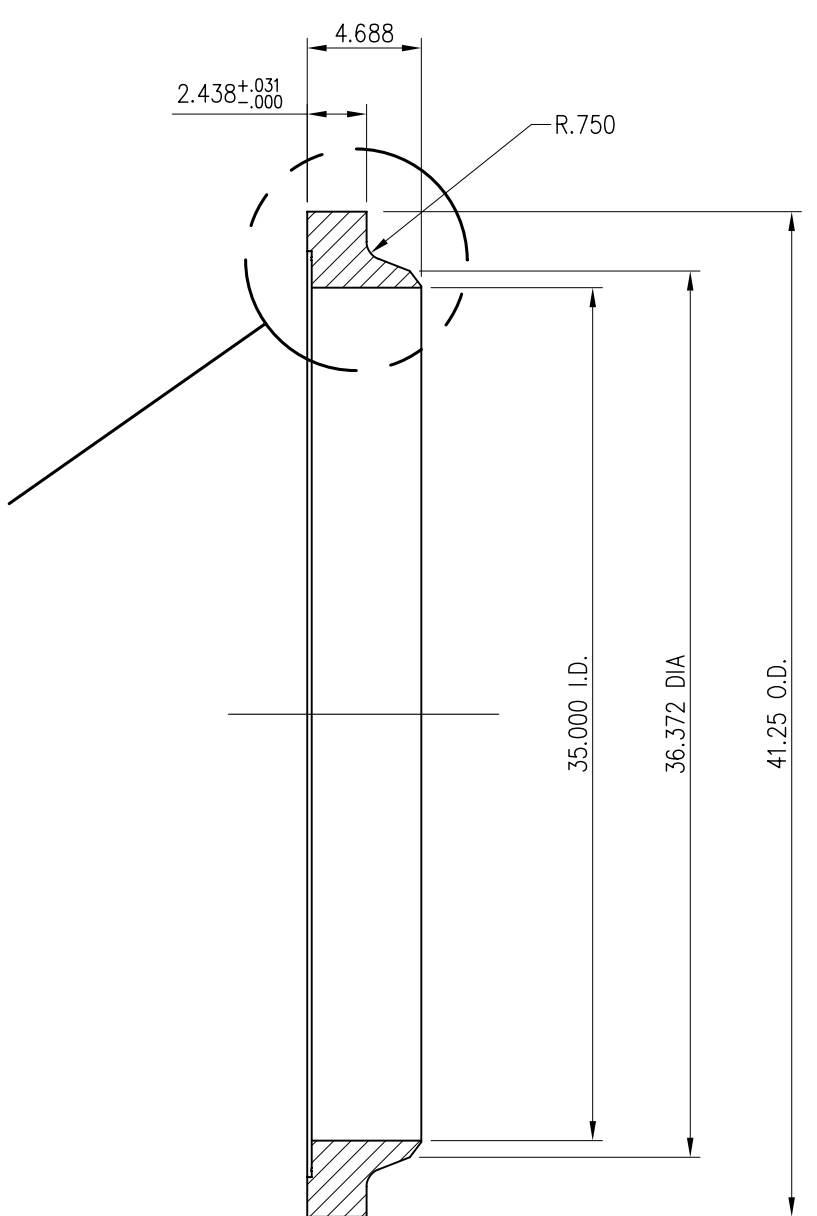
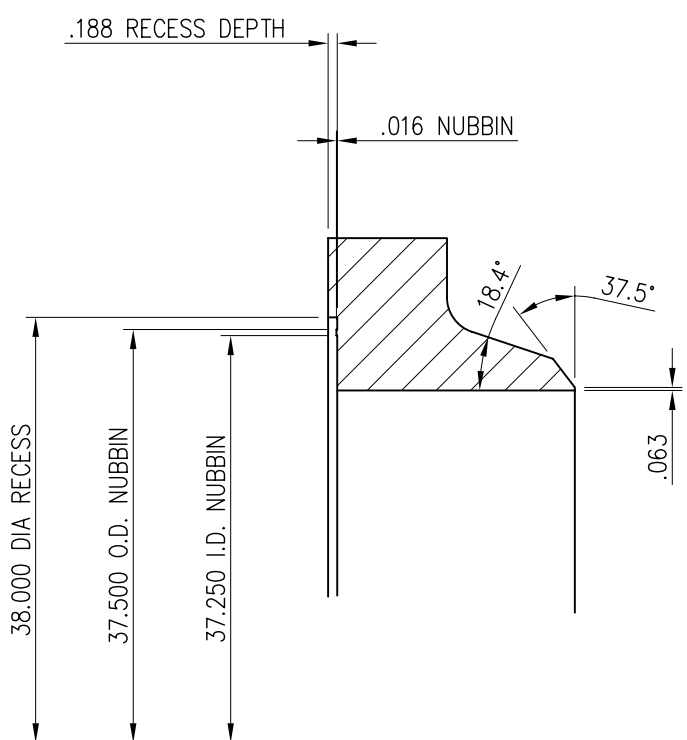
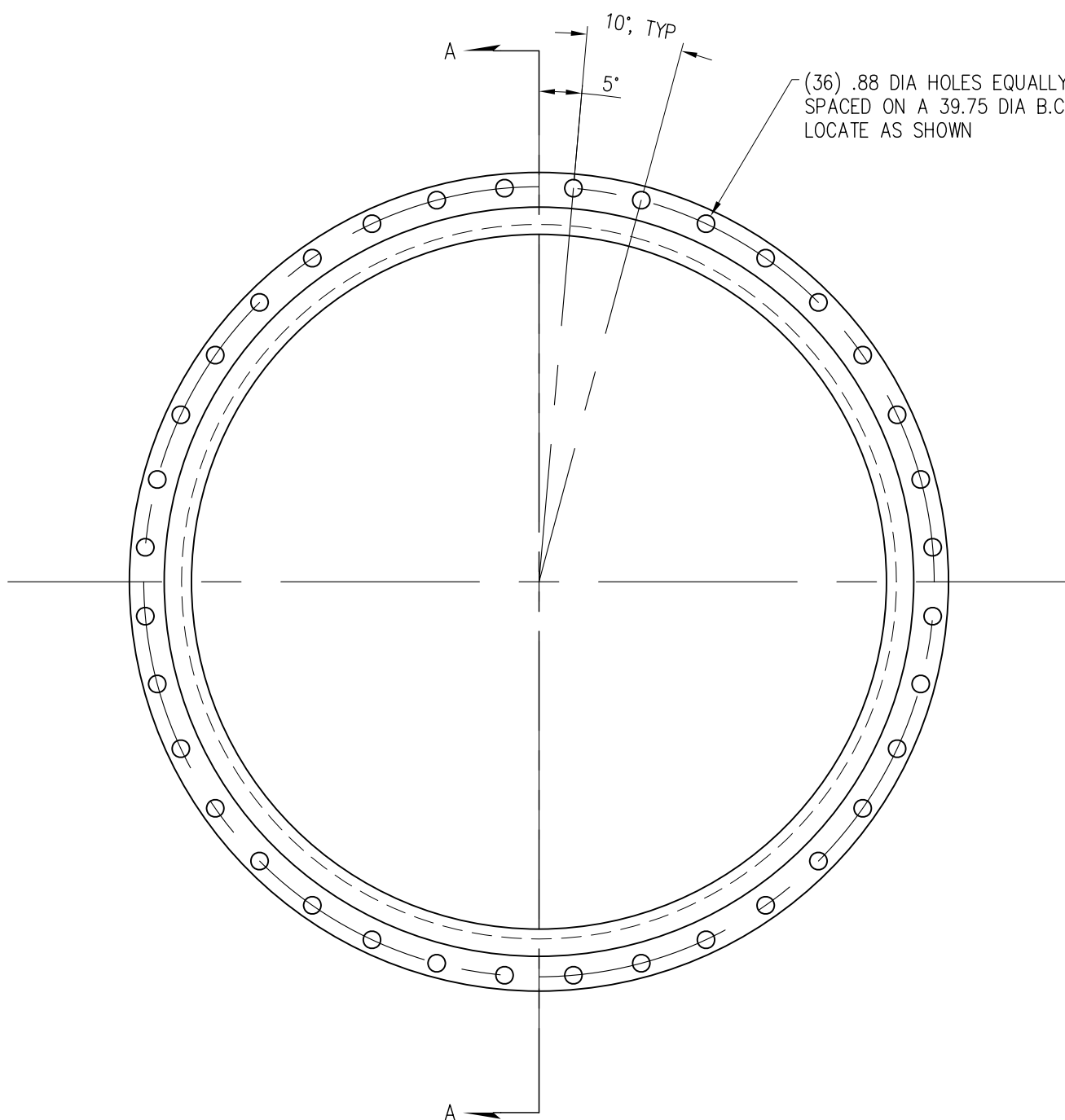
APPROVED

250 ALL OVER



SECTION A-A

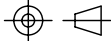
1	1	WELD NECK FLANGE	FORGED STEEL	SA-350 LF2			
Item	Qty	Description	Mat'l	Specification	Size	Dwg No	Part No
API BASCO DEFAULTS (UNLESS OTHERWISE SPECIFIED)			FILE NAME V:\S&T2000\Class4\4022\4022-99-1502-03.dwg		<div>API Basco</div> <div>Heat Transfer Technology</div> <div>WELD NECK FLANGE</div> <div>36" SEMI-FIN</div> <div>SIZE B</div> <div>DWG NO 4002-99-1502-03</div> <div>REV —</div>		
ALL DIMENSIONS IN INCHES UNLESS DENOTED AS METRIC (mm)		TOLERANCES (unless specified) PER TEMA STANDARDS	CONTRACT NO —				
1" = 1 INCH = 25.4mm			DRAWN 4/11/11 TJC				
 3rd ANGLE			CHECK				
This document contains proprietary information and may not be disclosed to others for any purpose or used for manufacturing purposes without written permission from API Heat Transfer.			SCALE 1:8				

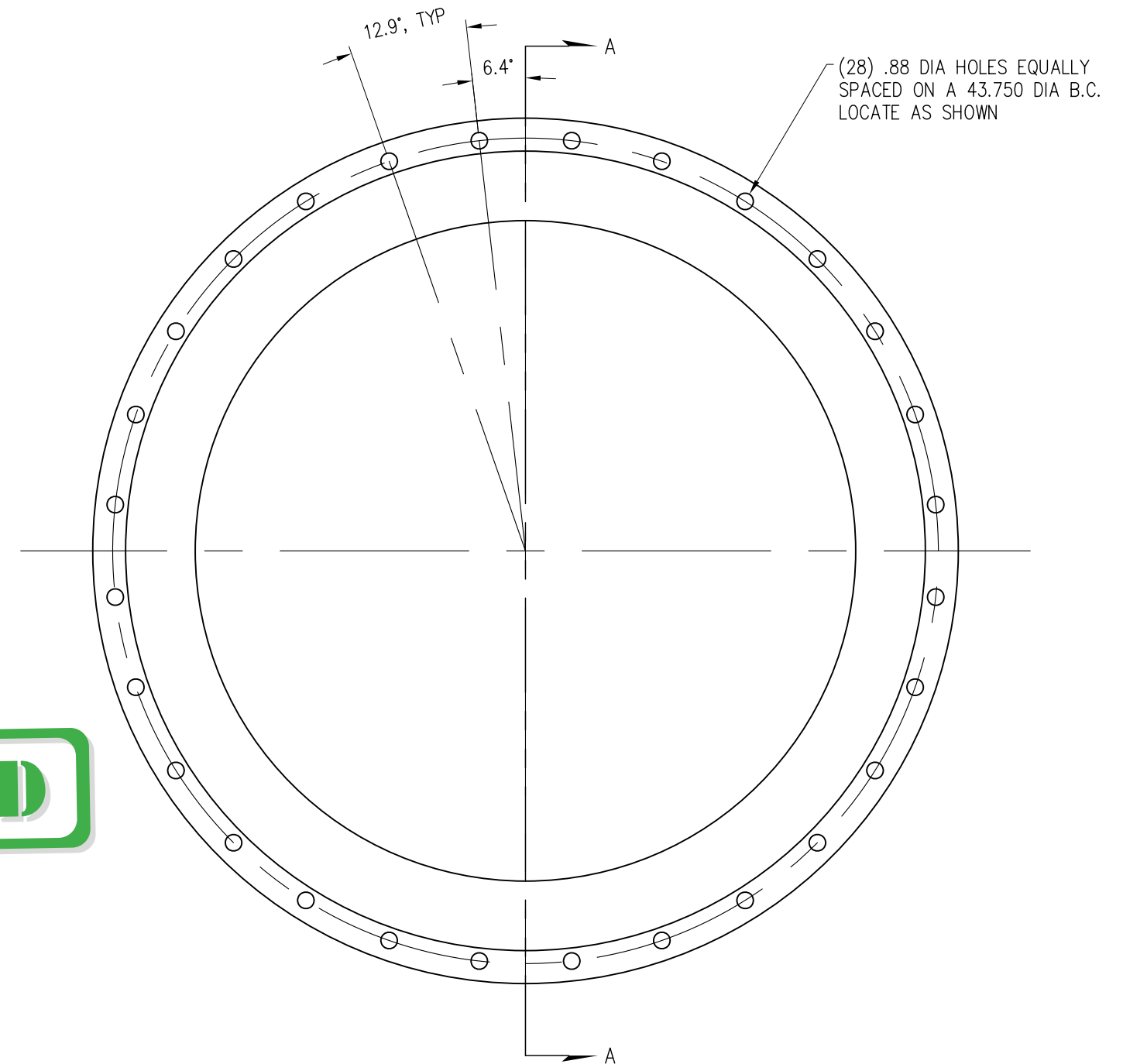
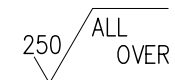



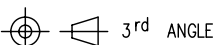
APPROVED

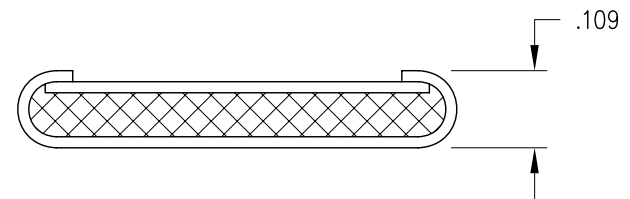
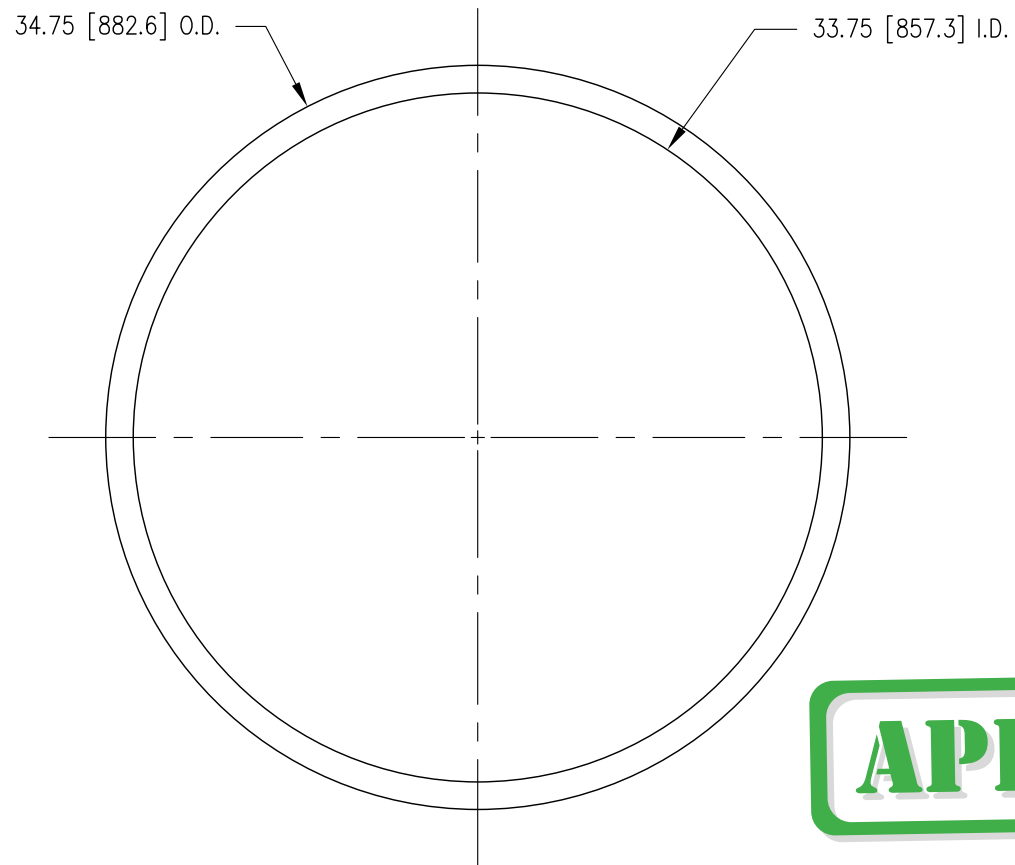
250 ALL OVER

SECTION A-A

1	1	WELD NECK FLANGE	FORGED STEEL	SA-350 LF2				
Item	Qty	Description	Mat'l	Specification	Size	Dwg No	Part No	
API BASCO DEFAULTS (UNLESS OTHERWISE SPECIFIED)			FILE NAME		<div>API Basco</div> <div>Heat Transfer Technology</div> <div>WELD NECK FLANGE</div> <div>36"</div>			
ALL DIMENSIONS IN INCHES UNLESS DENOTED AS METRIC (mm) 1" = 1 INCH = 25.4mm  3rd ANGLE This document contains proprietary information and may not be disclosed to others for any purpose or used for manufacturing purposes without written permission from API Heat Transfer.		V:\S&T2000\Class4\4022\4022-99-1502-04.dwg						
		CONTRACT NO —						
		DRAWN 4/11/11 TJC						
				CHECK		SIZE B		
		SCALE 1:8						

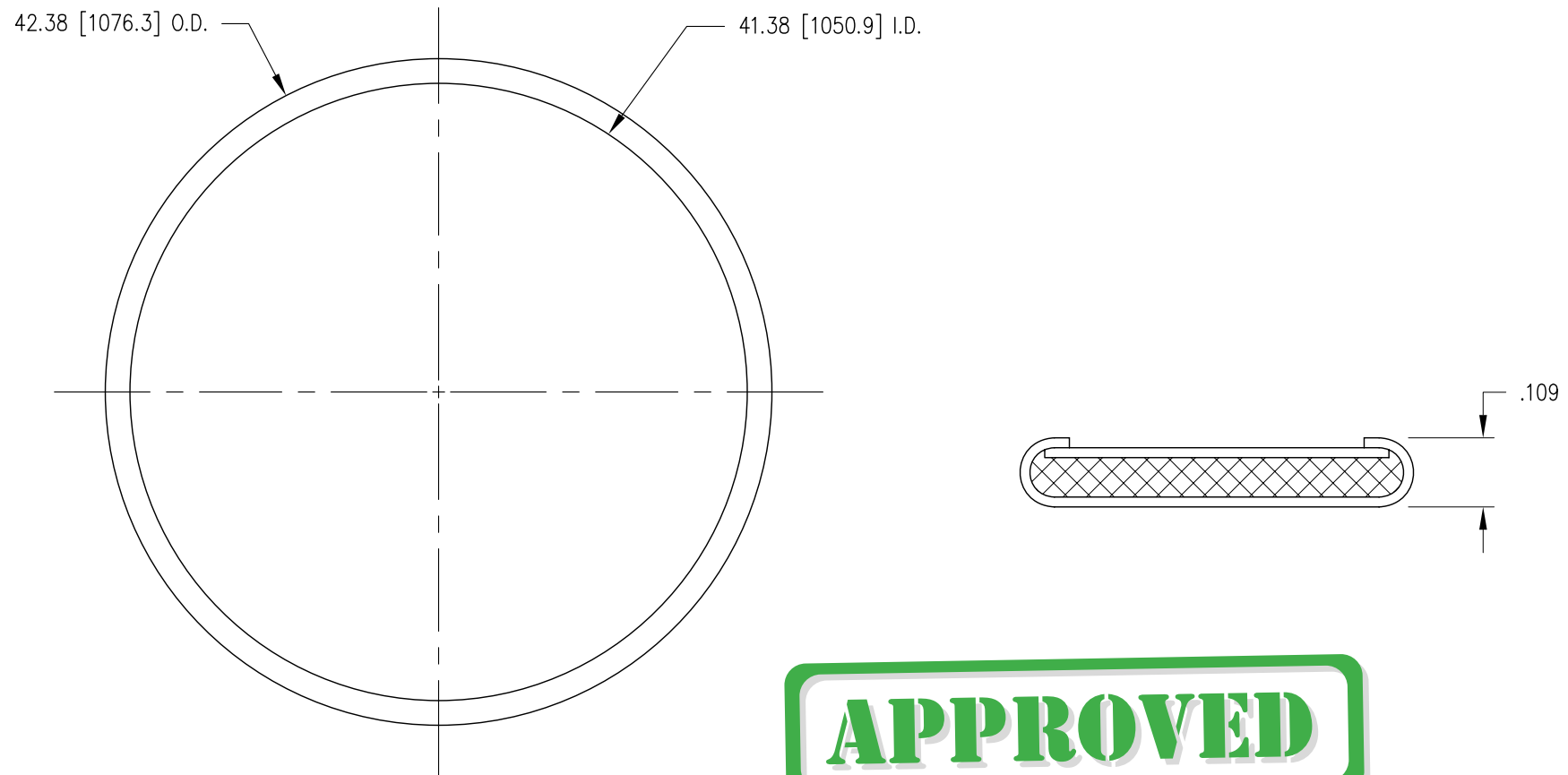


1	1	WELD NECK FLANGE	FORGED STEEL	SA-350 LF2			
Item	Qty	Description	Mat'l	Specification	Size	Dwg No	Part No
API BASCO DEFAULTS (UNLESS OTHERWISE SPECIFIED)			FILE NAME		<div style="text-align: center;">  <p>Heat Transfer Technology</p> <p>WELD NECK FLANGE 36" SHELL @ FLTG END</p> </div>		
<p>ALL DIMENSIONS IN INCHES UNLESS DENOTED AS METRIC (mm)</p> <p>1" = 1 INCH = 25.4mm</p>  <p>3rd ANGLE</p> <p>TOLERANCES (unless specified) PER TEMA STANDARDS</p> <p>This document contains proprietary information and may not be disclosed to others for any purpose or used for manufacturing purposes without written permission from API Heat Transfer.</p>			V:\S&T2000\Class4\4022\4022-99-1502-05.dwg				
			CONTRACT NO —				
			DRAWN 4/11/11 TJC				
			CHECK		SIZE		
			SCALE		DWG NO		REV
			1:8		4002-99-1502-05		—

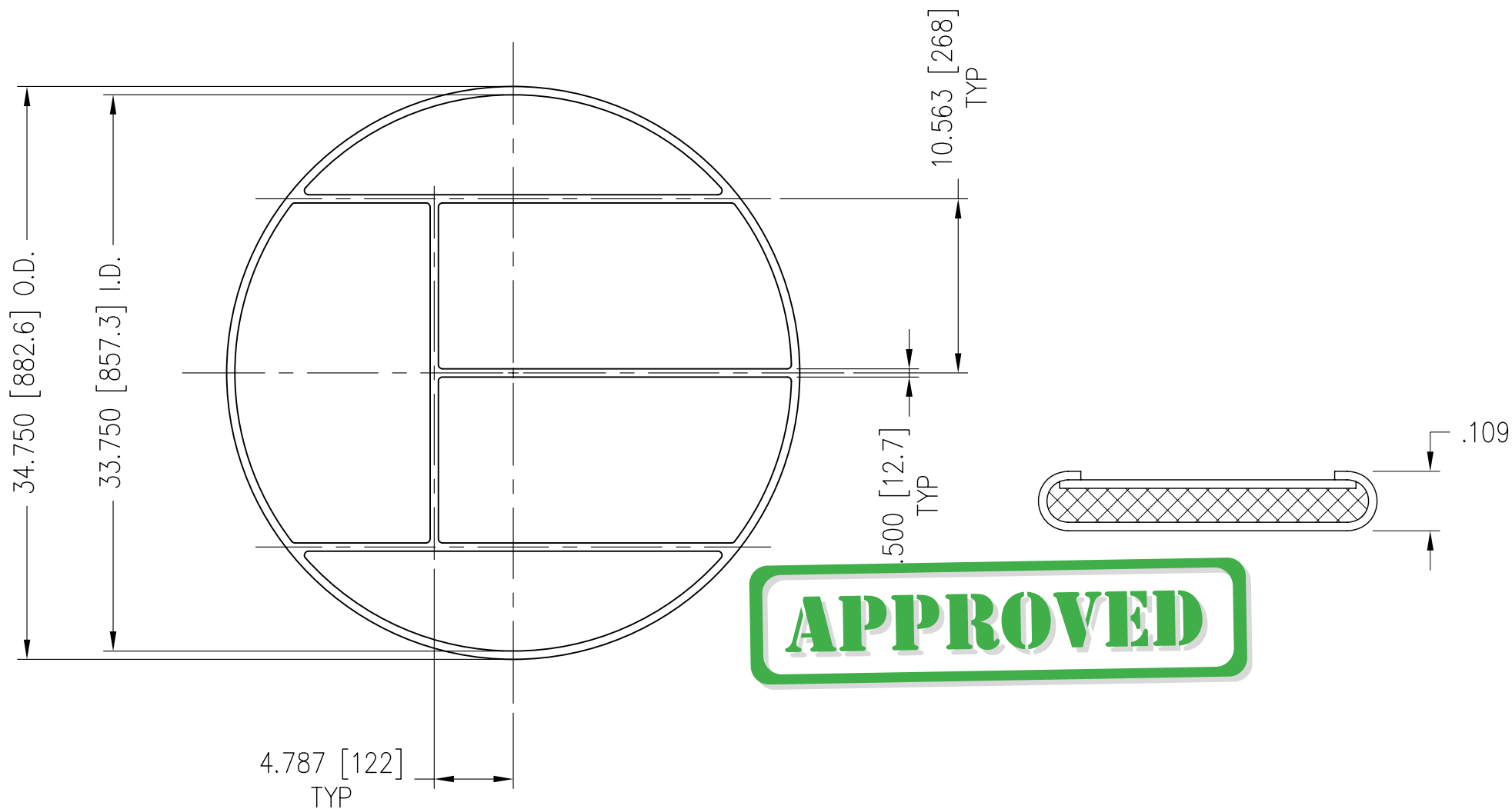


APPROVED

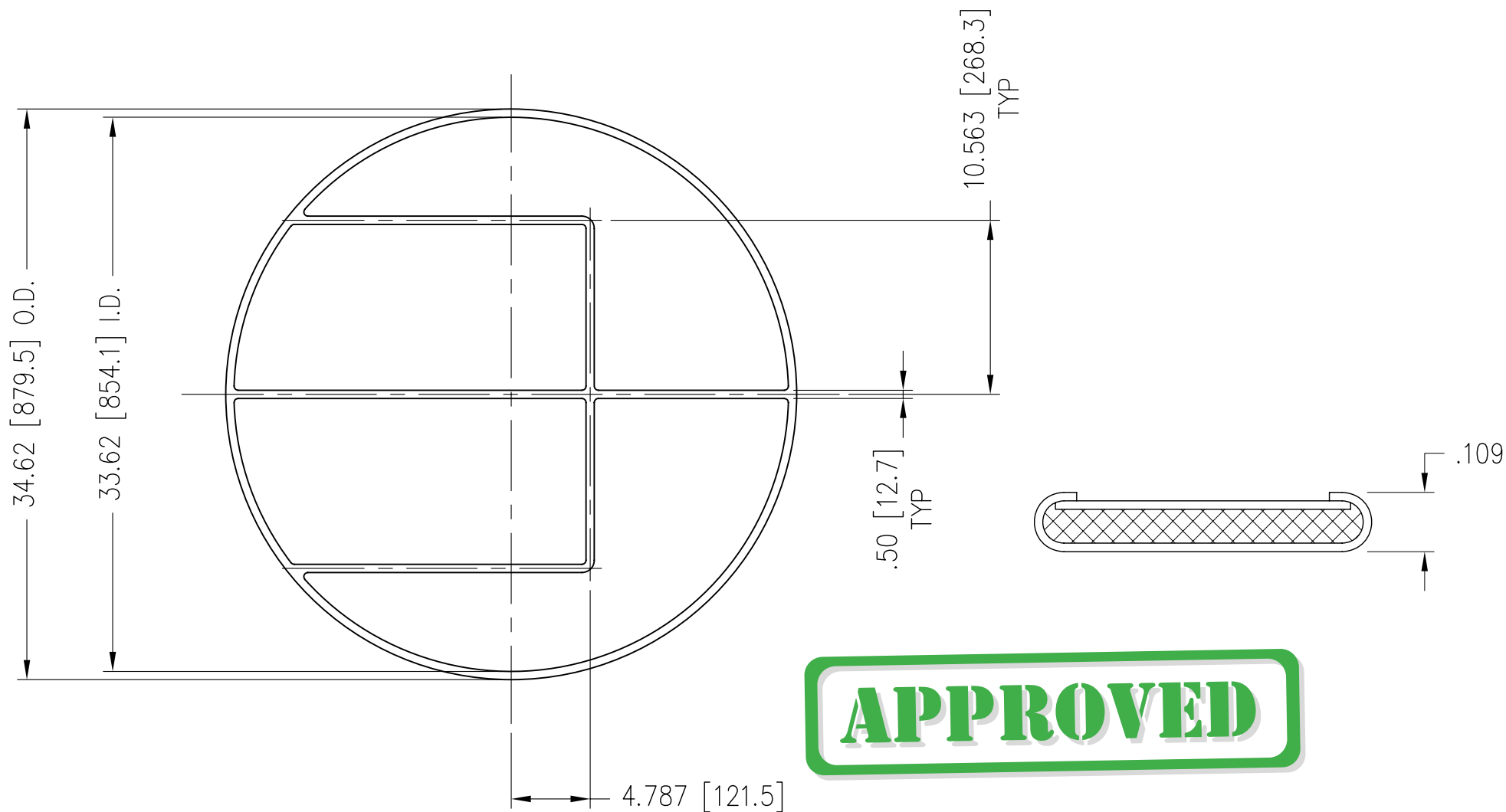
1	1	GASKET 34.75" OD x 33.75" ID x .109" TK				NON-ASB		STEEL JACKET											
ITEM NO.	QTY	DESCRIPTION				MAT'L.		SPECIFICATIONS		DWG SIZE	DWG NO.		PART NO.						
5					GASKET SIZE: 35"					API Basco									
4																			
3																			
2					BY: TJC		CKD:		SCALE: -	SIZE A	DRAWING NUMBER 4012-27-0917-00			REV					
1					DATE: 5/24/11		DATE:												
NO.	REVISION				BY	DATE													



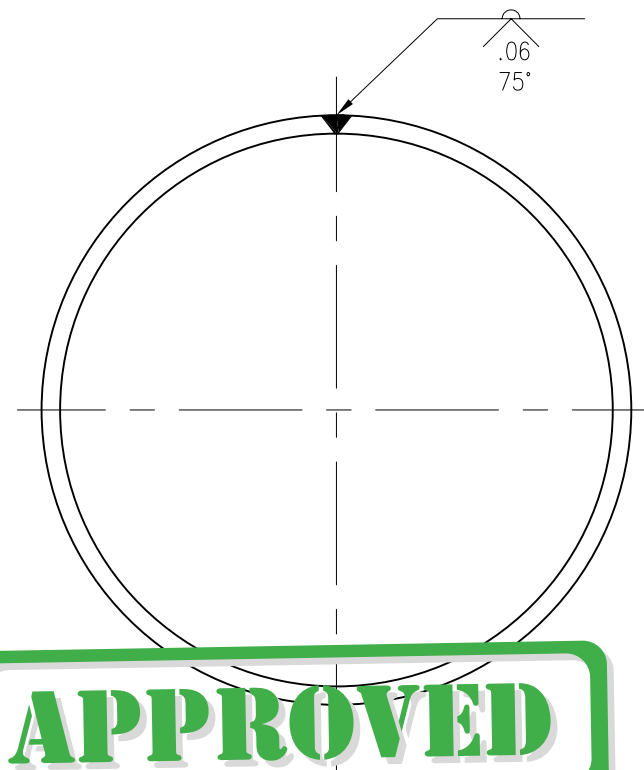
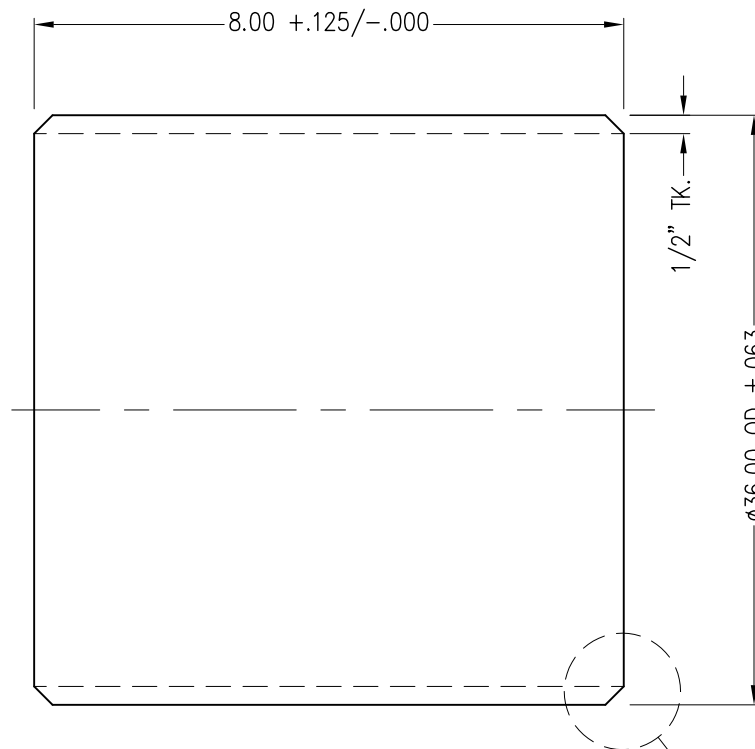
1	1	GASKET 42.38" OD x 41.38" ID x .109" TK				NON-ASB		STEEL JACKET											
ITEM NO.	QTY	DESCRIPTION				MAT'L.		SPECIFICATIONS		DWG SIZE	DWG NO.		PART NO.						
5					GASKET SIZE: 35"					API Basco									
4																			
3																			
2					BY: TJC		CKD:		SCALE: —	SIZE A	DRAWING NUMBER 4012-27-0917-01			REV					
1					DATE: 5/24/11		DATE:												
NO.	REVISION				BY	DATE													



1	1	GASKET 34.75" OD x 33.75" ID x .109" TK			NON-ASB	STEEL JACKET			
ITEM NO.	QTY	DESCRIPTION			MAT'L.	SPECIFICATIONS	DWG SIZE	DWG NO.	PART NO.
5					GASKET SIZE: 35"			API Basco	
4									
3									
2									
1					BY: TJC	CKD:	SCALE:	SIZE	DRAWING NUMBER
NO.	REVISION			BY	DATE: 5/24/11	DATE:	-	A	4015-27-0917-00
				DATE					REV



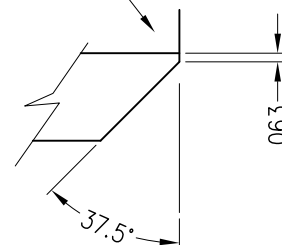
1	1	GASKET 34.62" OD x 33.62" ID x .109" TK			NON-ASB	STEEL JACKET			
ITEM NO.	QTY	DESCRIPTION			MAT'L.	SPECIFICATIONS	DWG SIZE	DWG NO.	PART NO.
5					GASKET SIZE: 35"			API Basco	
4									
3									
2									
1					BY: TJC	CKD:	SCALE:	SIZE	DRAWING NUMBER
NO.	REVISION			BY	DATE: 5/24/11	DATE:	-	A	4015-27-0917-01
				DATE					REV



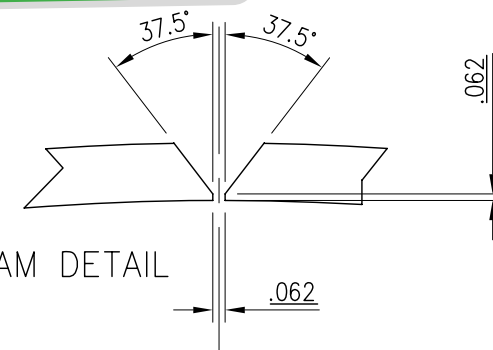
APPROVED

NOTES:

1. SHELL ROLLING SHALL BE IN ACCORDANCE WITH BASCO ENGINEERING SPEC. 106-1402. (EXCEPT DIA. TOLERANCE)
2. INTERNAL GRINDING OF WELDS IS NOT REQUIRED.
3. ALL DIMENSIONS IN INCHES UNLESS NOTED.
4. MTR'S, U-2 DATA REPORTS REQUIRED.
5. CERTIFY TO UCS-79 (d) & (e).
6. NO RADIOGRAPHY IS REQUIRED.
7. ALL WELD JOINTS: 70% EFFICIENCY.
8. VENDOR TO PROVIDE APPLICABLE WPS/PQR FOR RECORD.

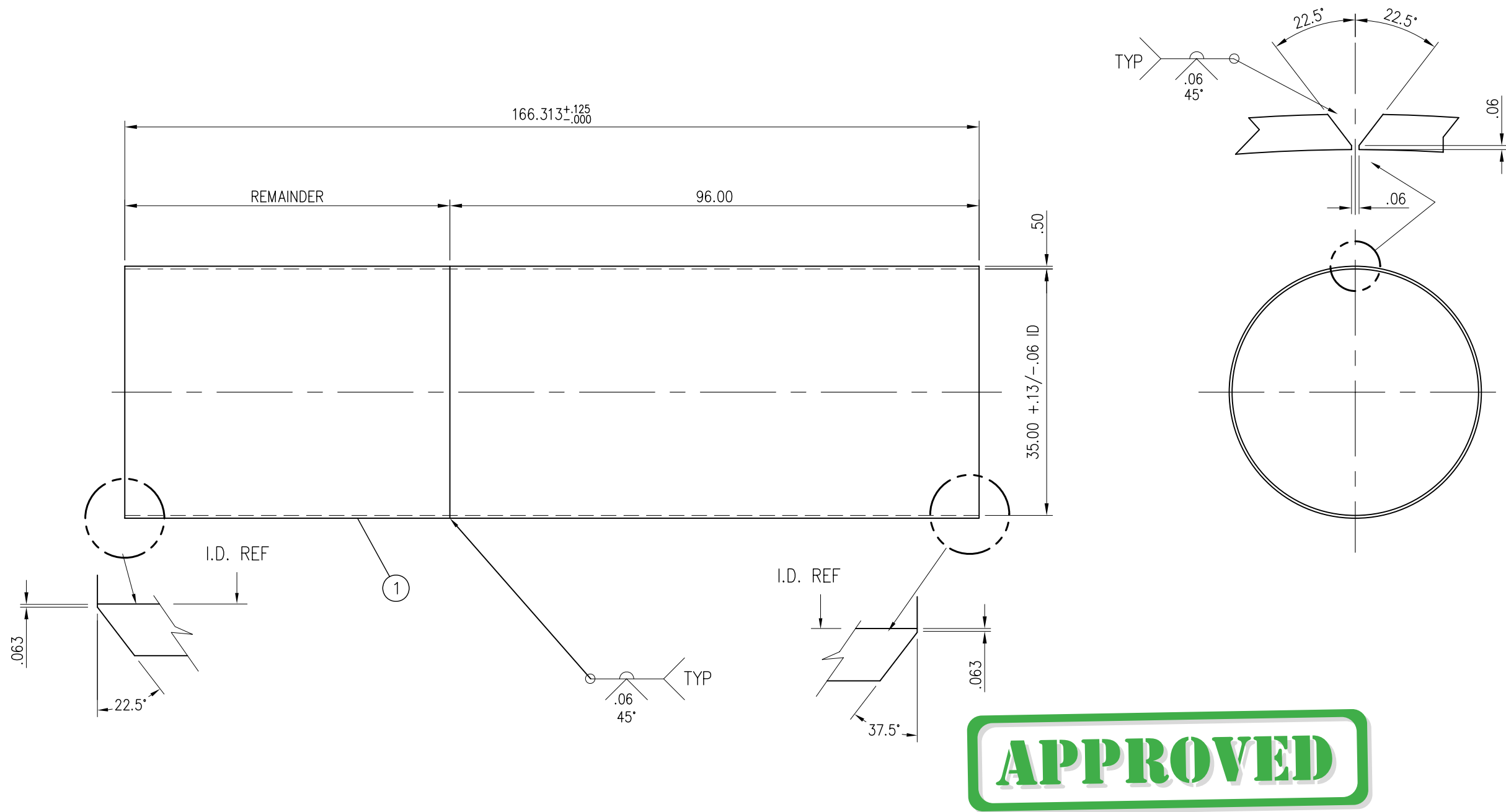


TYPE BOTH ENDS



LONG SEAM DETAIL

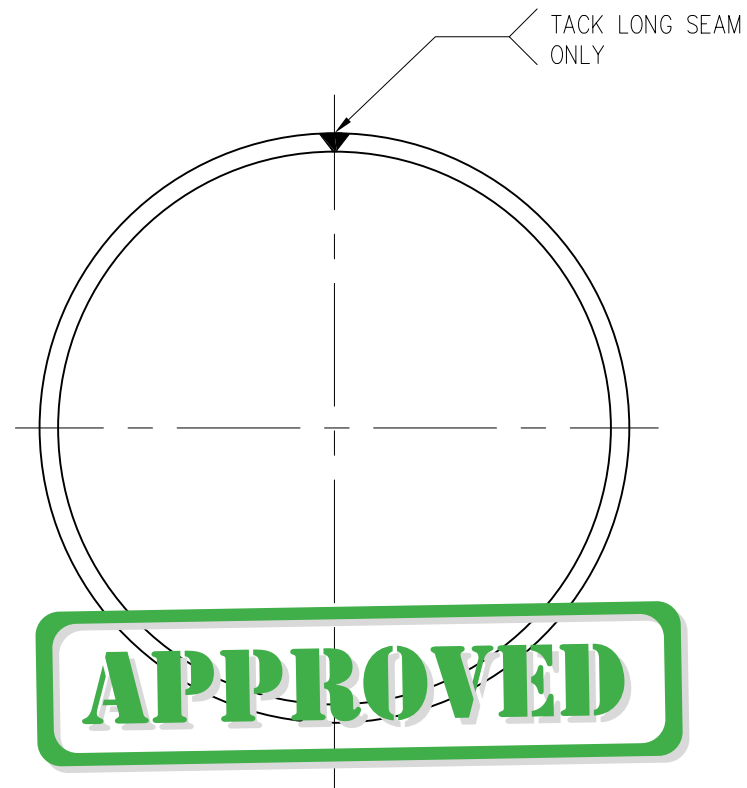
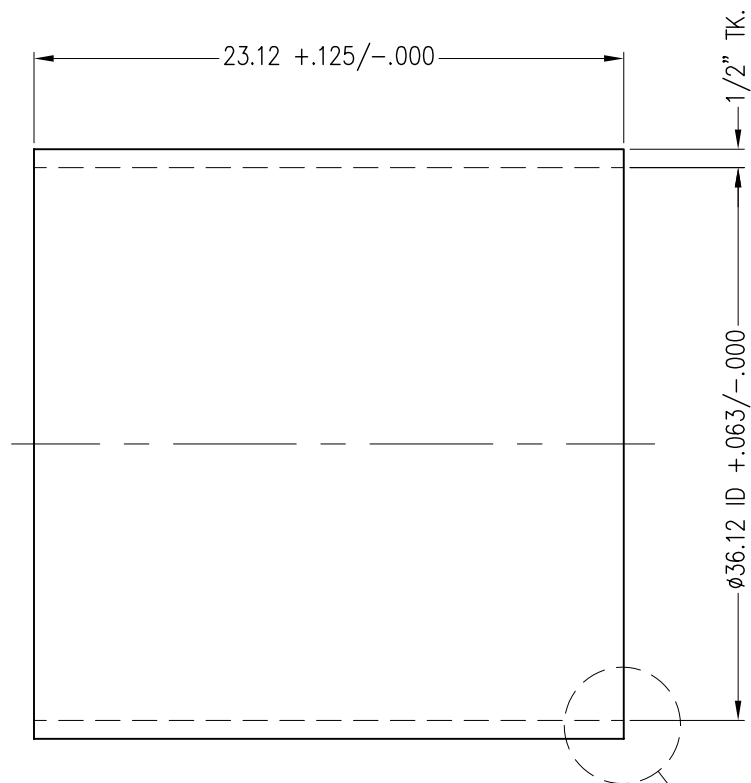
1	1	ROLLED SHELL, 36" OD X 1/2" TK. X 8.00" LG.				SA516-70			
ITEM NO.	QTY	DESCRIPTION			MAT'L.	SPECIFICATIONS	DWG SIZE	DWG NO.	PART NO.
5					ROLLED SHELL (CHANNEL PIPE) SIZE: 36" OD			API Basco	
4									
3									
2					BY: TJC	CKD:	SCALE:	SIZE	DRAWING NUMBER
1					DATE: 4/11/11	DATE:	-	A	4032-28-0801-09
NO.	REVISION			BY	DATE				REV



NOTES:

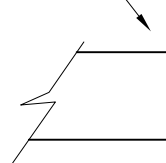
1. SHELL ROLLING SHALL BE IN ACCORDANCE WITH BASCO ENGINEERING STD NO 106-1402.
2. INTERMEDIATE GIRTH SEAMS PER DRAWING, SUBMIT ANY DEVIATION TO BASCO FOR APPROVAL.
3. INTERNAL GRINDING OF WELDS IS REQUIRED.
4. LOCATE LONG SEAMS 180° APART (IF REQUIRED).
5. 70% JOINT EFFICIENCY.
6. MTR'S & U-2 DATA REPORTS REQUIRED.
7. CERTIFY TO UCS-79 (d).
8. VENDOR TO PROVIDE APPLICABLE WPS/PQR FOR RECORD.
9. 34.813 DIA BAFFLE TO PASS THROUGH ENTIRE LENGTH OF FINISHED ROLLING.

1	1	ROLLED SHELL: 1/2" THK PER DRAWING		STEEL	SA516 GR 70			
Item	Qty	Description		Mat'l	Specification	Size	Dwg No	Part No
API BASCO DEFAULTS (UNLESS OTHERWISE SPECIFIED)				FILE NAME		<div>API Basco</div> <div>Heat Transfer Technology</div>		
ALL DIMENSIONS IN INCHES UNLESS DENOTED AS METRIC (mm)				CONTRACT NO —				
1" = 1 INCH = 25.4mm				DRAWN 4/11/11 TJC		ROLLED SHELL 35" ID		
3rd ANGLE				CHECK				
TOLERANCES (unless specified)				SCALE		SIZE	DWG NO	REV
2 Dec. Plc's (.XX) ±.03				1: 16		B	4032-28-0801-10	—
3 Dec. Plc's (.XXX) ±.010								
Angles ±.5 Deg.								
Flatness ±.03								

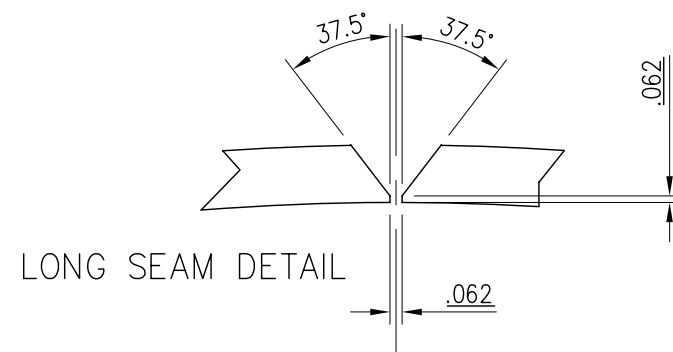


NOTES:

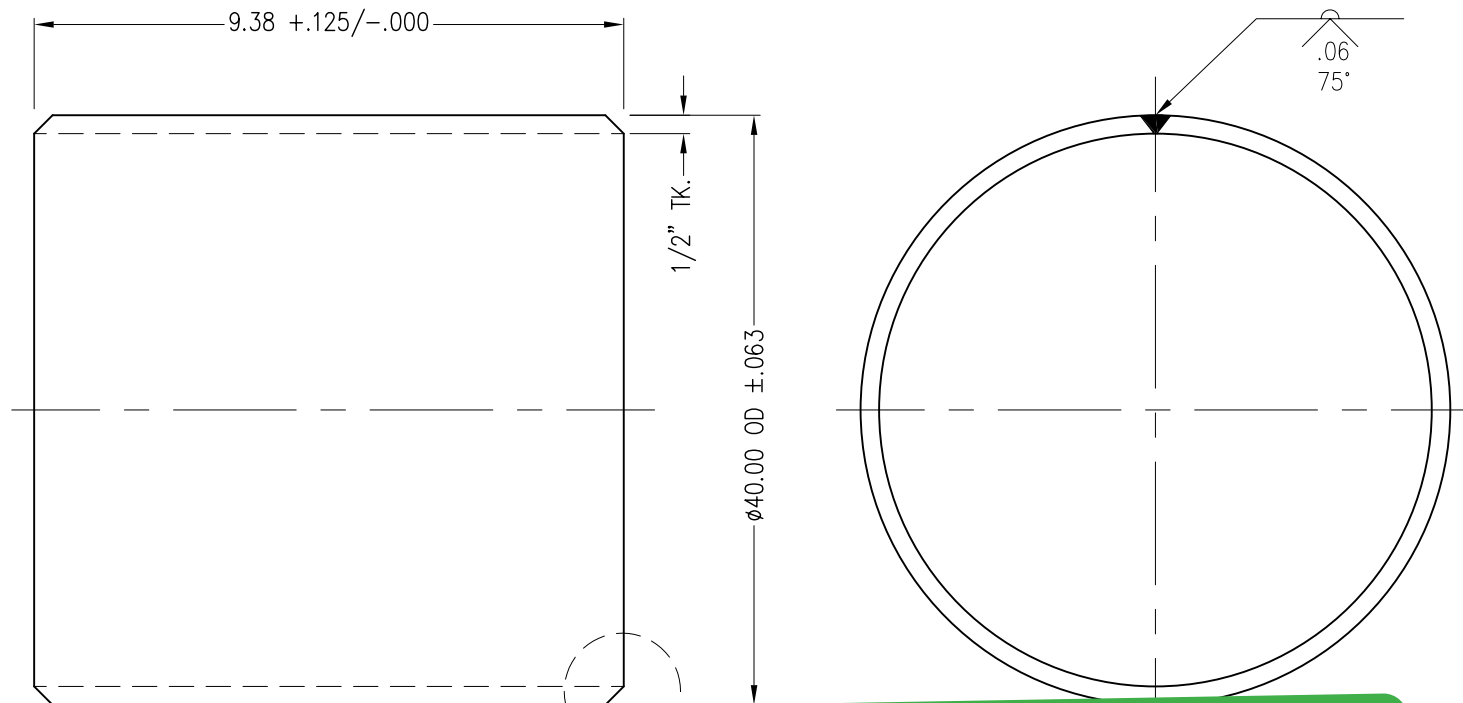
1. SHELL ROLLING SHALL BE IN ACCORDANCE WITH BASCO ENGINEERING SPEC. 106-1402. (EXCEPT DIA. TOLERANCE)
2. INTERNAL GRINDING OF WELDS IS NOT REQUIRED.
3. ALL DIMENSIONS IN INCHES UNLESS NOTED.
4. MTR'S, U-2 DATA REPORTS REQUIRED.
5. CERTIFY TO UCS-79 (d) & (e).
6. NO RADIOGRAPHY IS REQUIRED.
7. ALL WELD JOINTS: 70% EFFICIENCY.
8. VENDOR TO PROVIDE APPLICABLE WPS/PQR FOR RECORD.



TYPE BOTH ENDS



1	1	ROLLED SHELL, 36" ID X 1/2" TK. X 23.12" LG.				SA516-70			
ITEM NO.	QTY	DESCRIPTION			MAT'L.	SPECIFICATIONS	DWG SIZE	DWG NO.	PART NO.
5					ROLLED SHELL (CRADLE SUPPORT) SIZE: 36" ID			API Basco	
4									
3									
2					BY: TJC	CKD:	SCALE:	SIZE	DRAWING NUMBER
1	CORRECTED 36.12" DIM TO "I.D."			TJC	5/25/11			A	4032-28-0801-11
NO.	REVISION			BY	DATE	DATE: 4/11/11	DATE:	-	REV 1



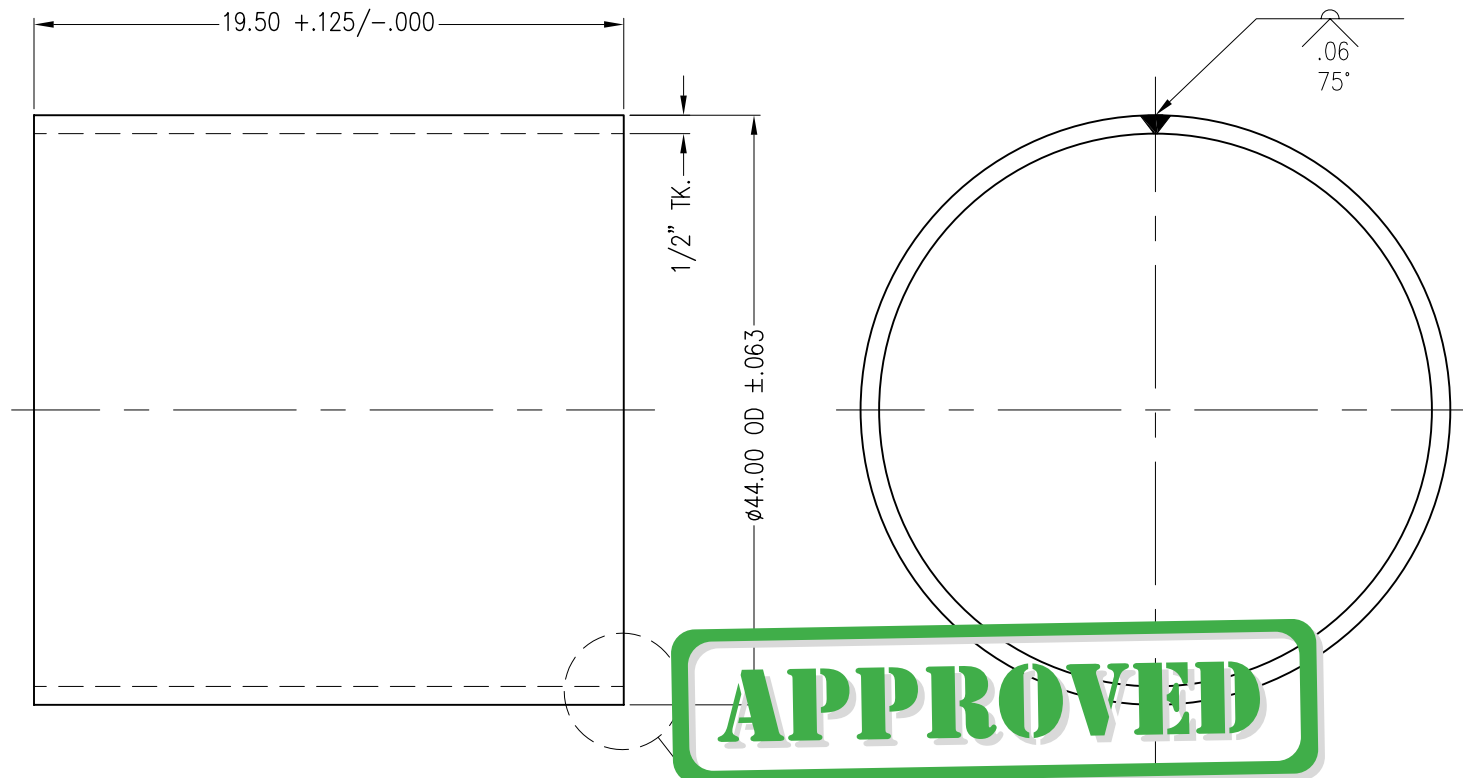
NOTES:

1. SHELL ROLLING SHALL BE IN ACCORDANCE WITH BASCO ENGINEERING SPEC. 106-1402. (EXCEPT DIA. TOLERANCE)
2. INTERNAL GRINDING OF WELDS IS NOT REQUIRED.
3. ALL DIMENSIONS IN INCHES UNLESS NOTED.
4. MTR'S, U-2 DATA REPORTS REQUIRED.
5. CERTIFY TO UCS-79 (d) & (e).
6. NO RADIOGRAPHY IS REQUIRED.
7. ALL WELD JOINTS: 70% EFFICIENCY.
8. VENDOR TO PROVIDE APPLICABLE WPS/PQR FOR RECORD.

TYPE BOTH ENDS

LONG SEAM DETAIL

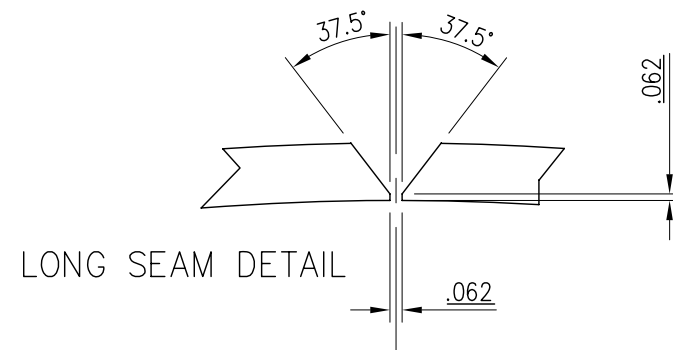
1	1	ROLLED SHELL, 40" OD X 1/2" TK. X 9.38" LG.				SA516-70			
ITEM NO.	QTY	DESCRIPTION			MAT'L.	SPECIFICATIONS	DWG SIZE	DWG NO.	PART NO.
5					ROLLED SHELL (SHELL COVER PIPE) SIZE: 40" OD			API Basco	
4									
3									
2					BY: TJC	CKD:	SCALE:	SIZE	DRAWING NUMBER
1					DATE: 4/8/11	DATE:	-	A	4032-32-0801-13
NO.	REVISION			BY	DATE				REV



NOTES:

1. SHELL ROLLING SHALL BE IN ACCORDANCE WITH BASCO ENGINEERING SPEC. 106-1402. (EXCEPT DIA. TOLERANCE)
2. INTERNAL GRINDING OF WELDS IS NOT REQUIRED.
3. ALL DIMENSIONS IN INCHES UNLESS NOTED.
4. MTR'S, U-2 DATA REPORTS REQUIRED.
5. CERTIFY TO UCS-79 (d) & (e).
6. NO RADIOGRAPHY IS REQUIRED.
7. ALL WELD JOINTS: 70% EFFICIENCY.
8. VENDOR TO PROVIDE APPLICABLE WPS/PQR FOR RECORD.

TYPE BOTH ENDS



1	1	ROLLED SHELL, 44" OD X 1/2" TK. X 19.50" LG.				SA516-70			
ITEM NO.	QTY	DESCRIPTION			MAT'L.	SPECIFICATIONS	DWG SIZE	DWG NO.	PART NO.
5					ROLLED SHELL (VAPOR BELT PIPE) SIZE: 44" OD			API Basco	
4									
3									
2					BY: TJC	CKD:	SCALE:	SIZE	DRAWING NUMBER
1					DATE: 4/11/11	DATE:	-	A	4032-33-0801-15
NO.	REVISION			BY	DATE				REV